

ROUND CEILING DIFFUSER

FEATURES

- KYODO series PC round ceiling diffusers are designed for both heating and cooling application.
- Its fashionable appearance makes it most popular with modern architectural designs.
- Super compact design for space-constraint area.
- The air pattern delivers effective room air distribution, even when the volume varies over a wide range.
- Uniform, 360 degree horizontal air pattern, with minimum noise and pressure drop.
- Gravity lock arrangement permits easy removal of inner panel.
- A gang operated radial blades volume damper (SED II) is used for easy adjustment from room side by screwdriver.
- Constructed of aluminium.

MODEL: PC-2

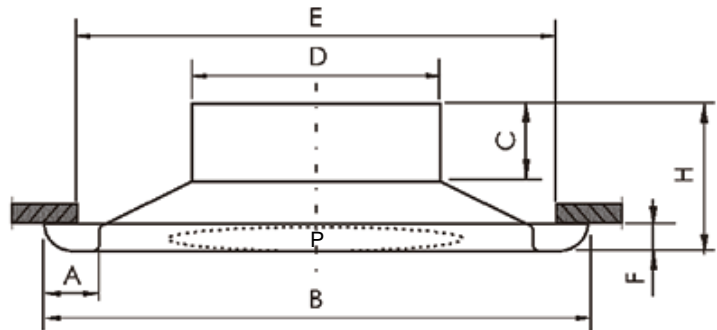


FINISH

Standard finish in baked white enamel.
Other colours are available on request.

ACCESSORIES

- Air Volume Control Damper:
- Radial Type (SED II).



DIMENSIONS

NECK SIZE D (mm)	B (mm)	A (mm)	E (mm)	F (mm)	C (mm)	H (mm)	P (mm)
Φ 150	Φ 285	35	255	9	80	125	180
Φ 200	Φ 343	35	310	9	80	125	220
Φ 250	Φ 457	40	420	9	80	135	280
Φ 300	Φ 572	40	530	13	80	145	360
Φ 350	Φ 686	45	630	16	80	155	430

TECHNICAL PERFORMANCE DATA

MODEL: PC-2

NECK SIZE C (mm)	Neck Velocity (m/s)	2.0	2.5	3.0	3.5	4.0	4.5	5.0	6.0	
Φ 150	Air Volume CMH	130	160	200	230	265	290	345	400	
	Throw (m)	Horizontal	0.4	0.6	0.7	0.9	1.1	1.2	1.5	1.6
		Vertical	2.0	2.9	3.4	3.9	4.5	5.2	5.6	6.5
	S.P. (Pa)	Horizontal	3	4	6	8	10	13	16	24
		Vertical	6	10	14	18	22	26	36	49
	NC	Horizontal	<20	20	23	27	31	36	40	43
Vertical		<20	22	27	31	35	38	43	47	
Φ 200	Air Volume CMH	230	295	350	400	465	520	580	700	
	Throw (m)	Horizontal	0.8	0.9	1.1	1.3	1.5	1.7	1.9	2.3
		Vertical	1.4	1.7	2.1	2.4	2.8	3.1	3.4	4.0
	S.P. (Pa)	Horizontal	2	3	5	7	9	12	15	22
		Vertical	5	9	12	16	21	24	33	45
	NC	Horizontal	<20	<20	22	25	29	33	37	41
Vertical		<20	20	25	29	32	36	39	45	
Φ 250	Air Volume CMH	360	450	545	635	710	810	900	1080	
	Throw (m)	Horizontal	1.0	1.2	1.3	1.6	1.7	1.9	2.2	2.7
		Vertical	4.0	5.2	6.3	7.4	8.3	9.1	10.5	12.5
	S.P. (Pa)	Horizontal	2	3	5	7	9	11	14	21
		Vertical	6	10	14	18	22	26	35	48
	NC	Horizontal	<20	<20	22	29	32	37	40	44
Vertical		<20	23	27	33	36	41	43	48	
Φ 300	Air Volume CMH	520	650	775	910	1035	1160	1300	1560	
	Throw (m)	Horizontal	1.1	1.3	1.7	1.8	2.0	2.3	2.5	3.2
		Vertical	5.2	6.6	7.5	8.8	10.4	11.5	13.1	15.8
	S.P. (Pa)	Horizontal	2	4	5	8	10	12	14	24
		Vertical	6	11	14	19	23	26	35	48
	NC	Horizontal	<20	<20	23	29	33	38	42	45
Vertical		<20	24	28	35	38	42	46	50	
Φ 350	Air Volume CMH	710	885	1055	1230	1405	1580	1760	2110	
	Throw (m)	Horizontal	1.2	1.3	1.7	2.0	2.2	2.4	2.7	3.2
		Vertical	5.8	7.0	8.5	10.0	11.2	13.0	14.2	16.8
	S.P. (Pa)	Horizontal	3	4	6	8	11	13	16	23
		Vertical	7	12	15	19	24	28	36	50
	NC	Horizontal	<20	20	23	30	33	38	41	46
Vertical		<20	23	28	33	37	41	44	50	

- SP -Static Pressure drops are in Pascals.
- NC -Noise Criterion based upon room absorption of 10 dB re 10⁻¹² watts.
- Throw -Throw at 0.5m/s terminal velocity in metres.