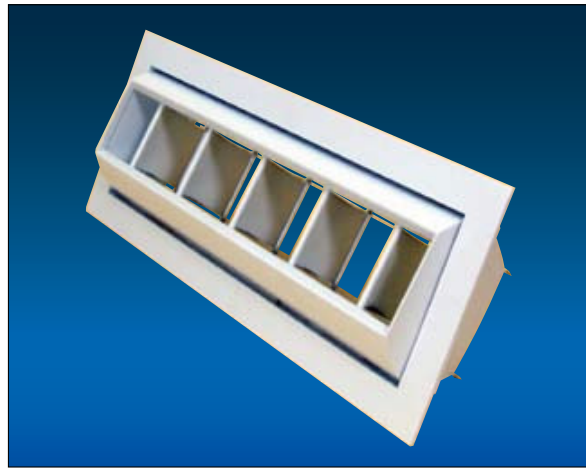


# DRUM JET DIFFUSER

## FEATURES

- KYODO series DJ drum jet diffuser is specially designed for large airflow and long throw.
- It consists of fixed outer frame, adjustable inner core and blades.
- The inner core can be adjusted up to 30° upward or downward.
- The blades can be adjusted up to 45° left or right.
- Due to its large opening area, it provides maximum air volume with minimum pressure drop and low noise level.
- Suitable for exposed ductwork or surface mounted.
- Constructed of aluminium or galvanized steel.

## MODEL: DJ



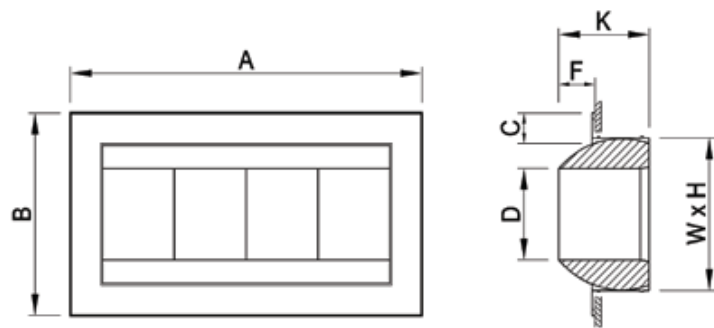
## FINISH

Standard finish in baked white enamel.  
Other colours are available on request.

## ACCESSORIES

Air Volume Control Damper:

- Opposed Blade Damper (VCD).



## DIMENSIONS

SIZE	W	A	H	B	K	D	F	C
250x150	250	300	150	200	90	90	40	30
300x150	300	350	150	200	90	90	40	30
475x150	475	525	150	200	90	90	40	30
625x150	625	675	150	200	90	90	40	30
500x250	500	528	250	332	150	150	60	50
650x250	650	732	250	332	150	150	60	50
750x250	750	832	250	332	150	150	60	50
900x250	900	982	250	332	150	150	60	50

## TECHNICAL PERFORMANCE DATA

### MODEL: DJ

Neck Size (mm)	Velocity (m/s)	1.0	1.5	2.0	2.5	3.0	3.5	4.0	4.5
	Pressure Loss (Pa)	9	15	25	31	39	50	76	97
250x150	CMH	135	205	270	340	405	475	540	605
	Throw (m)	2.8	4.2	5.8	6.5	7.2	7.7	8.4	8.8
	NC	<20	<20	<20	<20	22	26	31	35
300x150	CMH	165	245	325	405	485	570	650	730
	Throw (m)	3.2	4.7	6.4	7.1	8.0	8.8	9.4	9.9
	NC	<20	<20	<20	<20	23	29	33	37
475x150	CMH	255	385	515	640	770	900	1025	1155
	Throw (m)	3.5	5.1	6.9	8.0	8.7	9.5	10.3	10.8
	NC	<20	<20	<20	21	25	31	35	38
625x150	CMH	340	505	675	845	1015	1180	1350	1520
	Throw (m)	3.8	5.7	7.8	8.7	9.5	10.4	11.0	11.5
	NC	<20	<20	<20	22	27	33	38	40
500x250	CMH	450	675	900	1125	1350	1575	1800	2025
	Throw (m)	3.2	4.9	6.5	7.3	8.4	9.0	9.6	10.1
	NC	<20	<20	<20	<20	24	28	34	38
650x250	CMH	585	878	1170	1465	1755	2050	2340	2635
	Throw (m)	3.7	5.4	7.3	8.4	9.2	10.0	10.5	11.4
	NC	<20	<20	<20	20	25	31	36	39
750x250	CMH	675	1015	1350	1690	2025	2365	2700	3040
	Throw (m)	4.0	5.9	8.0	9.2	10.1	10.9	11.6	12.5
	NC	<20	<20	<20	21	26	32	37	40
900x250	CMH	810	1215	1620	2025	2430	2835	3240	3645
	Throw (m)	4.3	6.5	8.9	10.0	10.9	11.8	12.7	13.2
	NC	<20	<20	<20	22	29	34	38	41

- NC - Based on room absorption of 10dB, re 10-12 watts.
- Throw - Throw at 0.5m/s terminal velocity in metres.